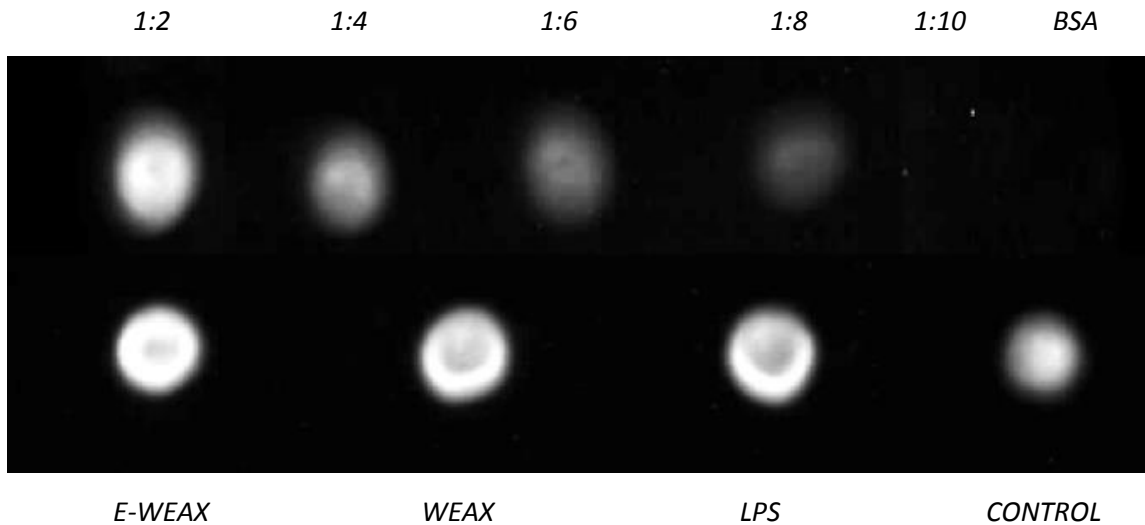
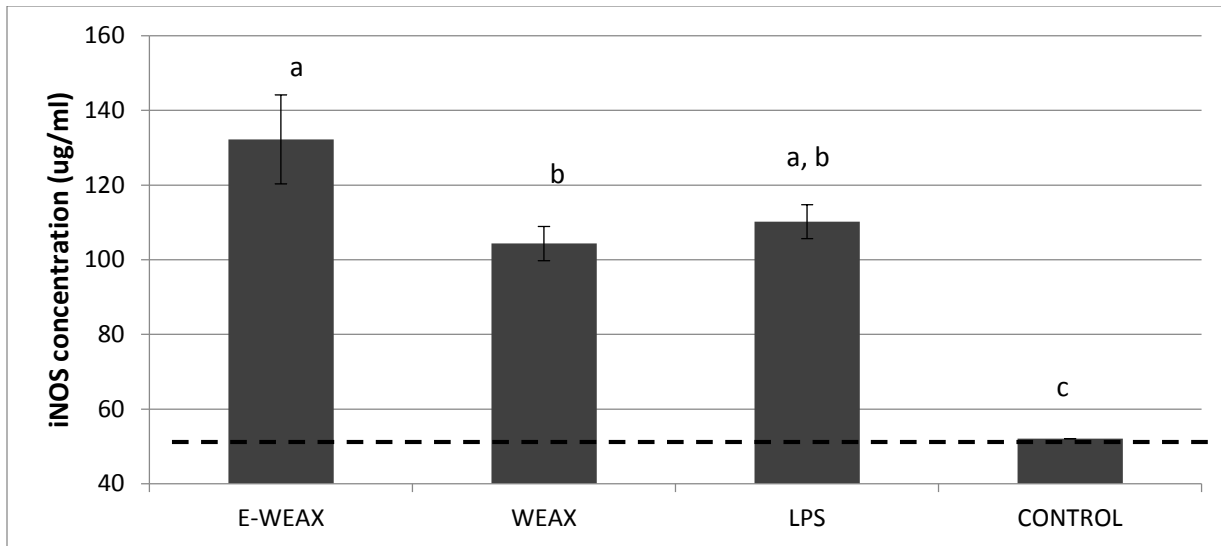


Figure 2. Effects of AXs and LPS on iNOS expression by U937 cells detected by dot blot assay

A.



B.



(A): The dots of the first line is iNOS standards (Dilution of stock human iNOS enzyme at 116 μ g/ml) and BSA which indicates a negative control standard containing BSA but no iNOS protein. The dots of the second line U937 cells were incubated for 24h with WEAX, E-WEAX and LPS (50 μ g/ml) treatment separately. **(B):** The iNOS levels detected from U937 cells were quantified by densitometry analysis using Image J and using the human iNOS protein (Cambridge Bioscience, UK) as a standard; The mean iNOS concentration (μ g/ml) in the cell lysates (mean + SEM of triplicate experiments) was used as an indication of iNOS enzyme levels in U937 cells; The mean values with different letters (a-c) indicate the significance ($p < 0.05$) for each comparison among all sample treatments; The dotted line '---' indicates the iNOS level of the control cells.